

Lower Duchesne Wetlands Project

Questions & Answers

LAND MANAGEMENT & ACCESS

Q: Will the Project create more weeds?

A: No. Under the Project, invasive plants such as Russian olive, pepperweed and tamarisk will be reduced.

- This reduction is a project objective aimed to improve wetland habitat.
- Noxious weed control will take place during all project phases, from reconstruction and construction through operation and maintenance.
- A detailed weed control plan is included as part of the LDWP Final Environmental Impact Statement (FEIS Appendix B).

Q: Will the project increase the burden on local government to control weeds?

A: No. The Ute Tribe will implement and manage the weed control plan with funding from the federal government.

Q: How will the LDWP lands be managed, operated and maintained?

- A:**
- Project lands will be managed by the Ute Tribe as a special use wetland wildlife natural resource area under the Proclamation of the Tribal Wildlife Advisory Board and Tribal Business Committee (see map on reverse side of page to view project boundaries).
 - The Tribe will be funded for operation and maintenance of the LDWP. Specific funding mechanisms will be detailed in Operating Agreements.
 - A detailed Comprehensive Conservation and Management Plan that specifies management strategies, habitat developments and permitted public uses will also be developed.

Q: What will be included in the Management Plan?

A: The primary management objective will be to restore and maintain wildlife habitat. Public access will be allowed for uses related to wetland-wildlife resources.

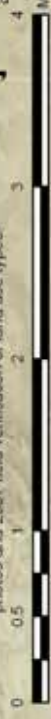
- Recreational uses compatible with the overall wildlife habitat goals will be allowed, such as fishing, hunting, environmental education, pedestrian use, non-motorized use and wildlife observation.
- Prohibited uses include off-road motorized vehicle use.

Q: How can I hunt and/or fish in the Project area?

- A:**
- Hunting, fishing and non-consumptive recreation will require Tribal permits or Tribal permission for access.
 - For more information, contact the Ute Tribe Fish and Game Department at:
Fish and Wildlife Office
P.O. Box 190
Ft. Duchesne, Utah 84026
Phone 435-722-5511
Fax 435-722-2677



Map compiled from a variety of sources and spatial relationship between layers may vary. To be used for planning purposes only. Aerial photo-September 2006. EIS analysis based on 1997 aerial photos and 2007 field verification of land use types.

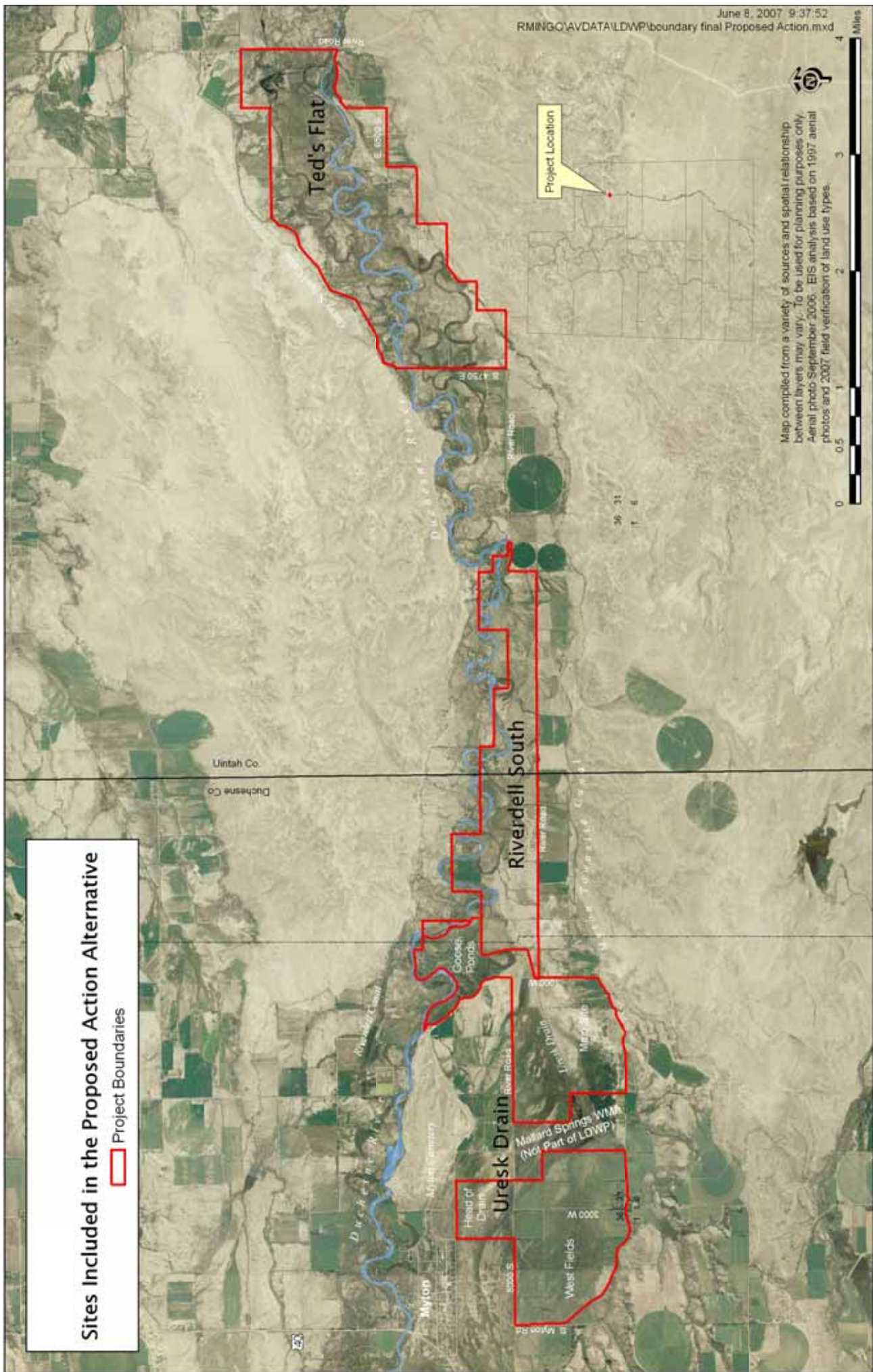


Project Location



Sites Included in the Proposed Action Alternative

Project Boundaries



Ted's Flat

Riverdell South

Uresk Drain

Mallard Springs WMA (Not Part of LDWP)

Head of Drain

West Fields

Goose Pond

Mylon Canyon

Mylon

Mylon Rd

Mylon Rd

Mylon Canyon

Mylon

Mylon Rd

Mylon Rd

Mylon Rd

Mylon Rd

Uintah Co.

Duchesne Co.

20

36 31
1 6

3000

3000

3000

3000

3000

3000

3000

3000

3000

3000

3000

3000

3000

3000

3000

3000

3000

3000

3000

3000

3000

3000

3000

3000

3000

3000

3000

3000

3000

3000

3000

3000

3000

3000

3000

3000

3000

3000

3000

3000

3000

3000

3000

3000

3000

3000

3000

3000

3000

3000

3000

3000

3000

3000

3000

3000

3000

3000

3000

3000

3000

3000

3000

3000

3000

3000

3000

3000

3000

3000

3000

3000

3000

3000

3000

3000

3000

3000

3000

3000

3000

3000

3000

3000

3000

3000

3000

3000

3000

3000

3000

3000

3000

3000

3000

3000

3000

3000

3000

3000

3000

3000

3000

3000

3000

3000

3000

3000

3000

3000

3000

3000

3000

3000

3000

3000

3000

3000

3000

3000

3000

3000

3000

3000

3000

3000

3000

3000

3000

3000

3000

3000

3000

3000

3000

3000

3000

3000

3000

3000

3000

3000

3000

3000

3000

3000

3000

3000

3000

3000

3000

3000

3000

3000

3000

3000

3000

3000

3000

3000

3000

3000

3000

3000

3000

3000

3000

3000

3000

3000

3000

3000

3000

3000

3000

3000

3000

3000

3000

3000

3000

3000

3000